

OUR MISSION

Here at the Dry Eye Healing Institute, we take a novel approach to dry eye by mitigating both the signs and symptoms of Dry Eye Disease and Blepharitis. Leave with your eyes feeling soothed and refreshed.

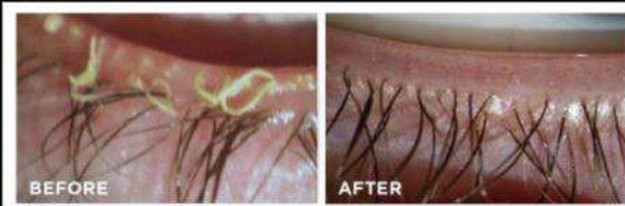
It's more than just constant eye dropping!

Zocular Zest



Removing biofilm and significantly reducing lid debris

Systane iLux



Improving function of clogged Meibomian Glands

Get in Touch

ADDRESS:

5600 W Maple Rd Ste A120,
West Bloomfield, MI 48322

PHONE:

(248)-413-8030

WEB:

HealingDryEye.com

SOCIAL MEDIA:

 @dryeye_specialist

 Dry Eye Healing Institute &
Michigan Dry Eye Center of
Excellence



DRY EYE

Healing institute

LOOK GOOD

FEEL GOOD

SEE GOOD



JENNIFER SHABA O.D.
OCULAR SURFACE DISEASE EXPERT,
BOARD CERTIFIED OPTOMETRIST

OUR SERVICES

Dry Eye Disease is a chronic, inflammatory, and sometimes progressive condition that affects at least 30 million people in the U.S, many not yet diagnosed. DED is *not* considered normal aging.

This condition is best treated early since it may be more difficult to control as it advances, and when severe, has the potential to affect quality of life. We're bringing a holistic approach to eyecare.

"Drug-Free, Drop-Free Treatments"

- ✓ Amniotic Membranes
- ✓ BlephEx Zest Blepharitis
- ✓ iLux MGD Treatment
- ✓ Lumenis IPL
- ✓ PRP Eye Therapy



INTENSE PULSED LIGHT (IPL)

Gently and effectively treats your skin and eyelid inflammation with maximum safety, comfort, and full customization to your skin type and condition.

EYELID STRUCTURE AND FUNCTION ASSESMENTS

Cutting edge technology of your oil gland structure. Designed for efficient imaging of Meibomian Gland Structure in High Definition using LipiScan.

ILUX MGD TREATMENT

Experience fast and effective relief through a proven method to melt the clogged gland oils and remove significant gland obstructions.

MICROBLEPHAROEXFOLIATION

Performed to remove demodex dandruff, biofilm, and oil residue from eyelid margins.



MEIBOMIAN GLAND DYSFUNCTION (MGD)

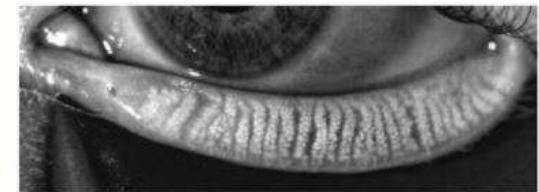
Healthy Meibomian glands secrete oil with every blink, this oil serves as a critical component of a healthy tear film. When the glands are not functioning correctly this is referred to as MGD, which is the leading cause of Dry Eye Disease and can be the source of your symptoms.

WHAT IS MGD?

WHAT CAUSES IT?

This is caused by a change in the Meibomian glands. If left untreated, MGD is a chronic progressive condition and may worsen overtime

What Do Meibomian Glands Look Like?



NORMAL GLAND STRUCTURE



SHORTENED GLANDS & GLAND LOSS



SIGNIFICANT GLAND LOSS